

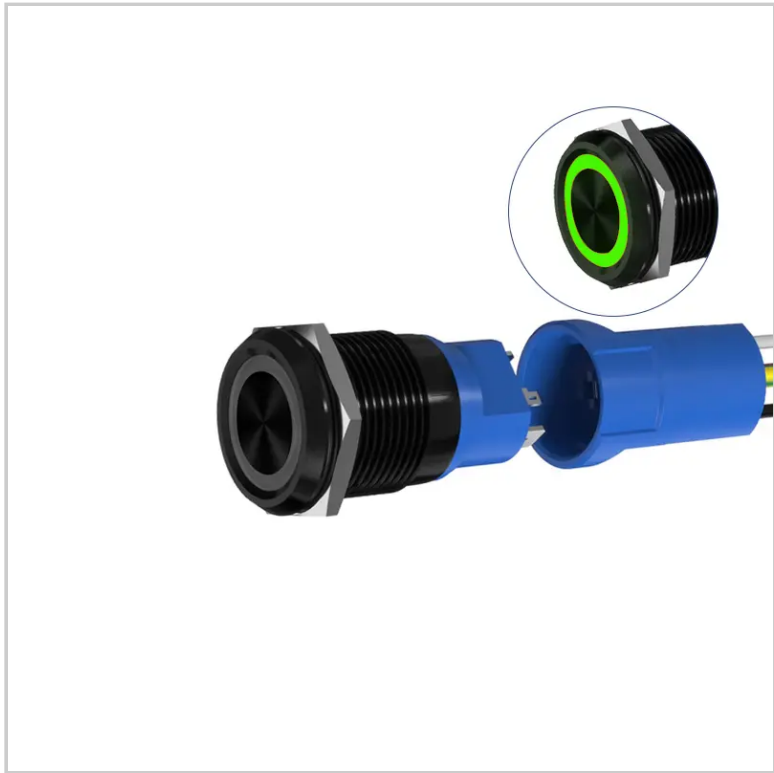
CATEGORIES

- New Products Switch
- High current button switch +
- Push Button Switch +
- Micro Travel PushButton +
- Touch Switch And Piezo Switch
- Emergency Stop Switch +
- Indicator Light +
- Key switch and Rotary switch
- Buzzer
- Switch Accessories

FEATURED PRODUCTS

- custom buttons 19MM
Aluminu...
- push to start 22mm
mushroom...
- pushbutton stainless
steel ...
- High waterproof rating
ip67...
- momentary switch push
butto...

High Quality Black Oxide Button 22mm switch Ring LED RGB Tri-Color with 10Amp



SHORT DESCRIPTION:

Product Model: HBDS1-D22C-□E(Z)/J/T
Mounting Hole Size: 22MM
Switch Value: Ith: 10A, UI: 6-48V , 220V
Operation Type: Momentary, Latching
Min.Order Quantity: 20 Piece/Pieces
Method Of Payment: T/T(Wire transfer), Paypal, Credit card
Related video: [Click](#)
PDF file: [Click](#)
Available equipment: Elevators, charging piles, automation equipment, motor vehicles, yachts, access control, automatic guided vehicles, lathes, lifts, lawn mowers



SEND EMAIL TO US

Product Detail Why choose us ? Product Tags



Main selling

- Metal push button
- Signal lamp
- High current switch(Xb2,LA38)
- Micro button switch
- Emergency stop pushbutton

►Product Description:

Introducing our latest 22mm [Black Oxide Button](#) - designed for high current applications of up to 10Amps. With a sleek and modern design, this button supports flat head, ring LED and power symbol, as well as RGB tri-color options for added versatility. The black oxide finish provides added durability, making it ideal for use in rugged environments. This button is easy to install and compatible with a wide range of applications, including industrial control systems, automation equipment, and automotive electronics. Experience the quality and reliability of our 22mm Black Oxide Button, designed to meet your high-performance needs.

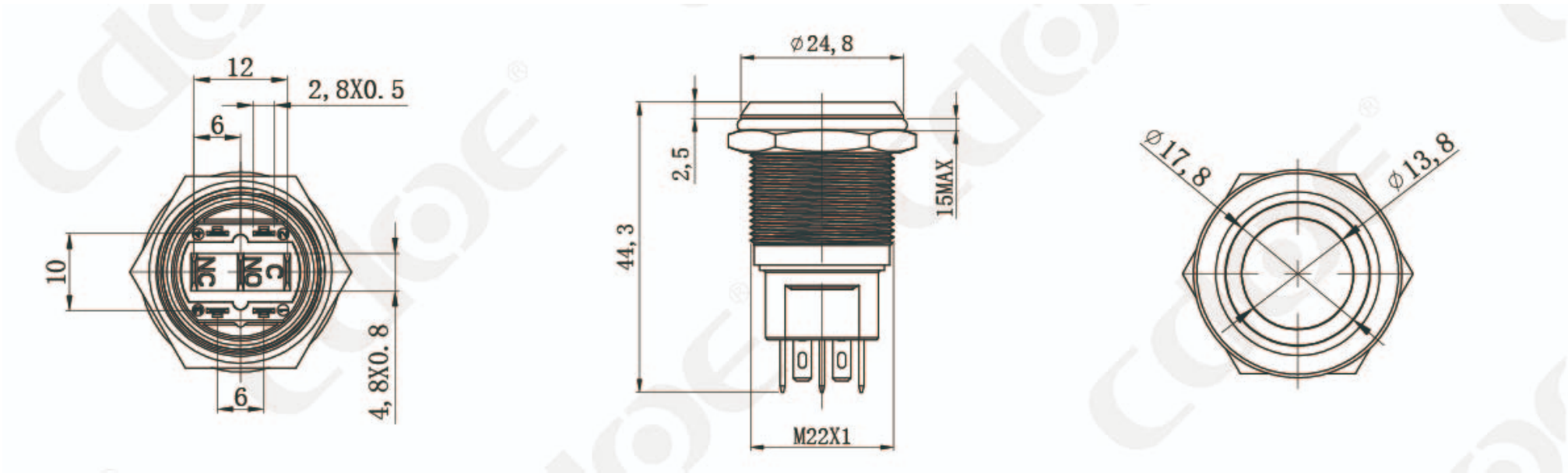
►Product Model Specification:

Model Description：HBDS1-D ☆ ○ □ ◇ ■ /◆ /◎ /★ /▲ /△

For example:HBDS1-D22C-11EZ/J/S/R/DC12V/R

HBDS1-D	Series number	Yueqing Dahe company internal product code
☆	Mounting hole size	22: φ22mm;
○	Head shape	C: Concave; F: Flat round head;
□	Contact combination	11: 1NO1NC;
◇	LED type	E: Ring LED; ET: Ring and power symbol LED; P: Plastic big button surface without LED; DP: Plastic big button surface with LED; PT: Customized symbol without LED(Plastic); DPT:Customized symbol with LED(Plastic); No letters:Without LED
■	Operation type	No letters: Momentary; Z: Latching;
◆	Wiring Type	J: Pin terminal;
◎	Shell material	S: Stainless steel; PH: Engineering plastic;
★	Shell plating color	■R:Red ■G:Green ■Y:Yellow ■O:Orange ■B:Blue ■W:White ■H:Black
▲	LED voltage	AC/DC6V; AC/DC12V; AC/DC24V; AC/DC36V; AC/DC110V; AC/DC220V
△	LED color	■R:Red ■G:Green ■Y:Yellow ■O:Orange ■B:Blue ■W:White ■RG:Red+Green ■RB:Red+Blue ■RGB:Red+Green+Blue

►Product Size:



►Technical Parameter:

HBDS1-D22C black oxide button 22mm switch	
Product model :	HBDS1-D22C-□E(Z)/J/T
Mounting hole size :	22mm
Switch value:	Ith:5A(10A),UI:250V
Operation type:	Momentary,Latching
Contact configuration:	1NO1NC
Appearance material:	Head:Aluminum alloy color plating; Switch button surface:Aluminum alloy color plating; Base:Plastic PA66; Contact:Silver alloy;
Terminal type:	Pin terminal
Working environment temperature:	-25℃ ~ +65℃
Connection form:	Supporting connector/Welding wire;
Lamp bead parameters	
Rated voltage :	6V/12V/24V/36V/110V/220V;(Other voltages can be customized)
Rated current:	≤20mA
Led color:	Red/Green/Yellow/Orange/Blue/White/RG/RB/RGB
Led life:	50000 hours
Protection grade:	IP65
Contact resistance:	≤50mΩ
Insulation resistance:	≥100MΩ
Electrical resistance:	AC2500V, 1min, no flicker and breakdown;
Life	
Mechanical Life: 0.5 million times for latching,One million times for momentary	

►Problems Encountered By Buyers:

Q:Can this button be illuminated?

A:“Yes, this button is designed to support ring LED illumination and power symbol options for added functionality and convenience.”

Q: Can the color of the illumination be changed?

A:“Yes, this button supports RGB tri-color options for added versatility and customization.”

Q:Can this button be customized with a specific logo or design?

A:“Thank you for your interest in our black oxide button. We do offer the option for customers to include a specific symbol header on the button. To proceed with this option, we would require a file of the symbol to be provided to us. The file should be in a specific format that meets our requirements, and we can provide you with the specifications for this file. Please contact us for more information on how to proceed with a custom symbol for your button.”

►Related Product News:

- >>What are the types of Push Button switches?
- >>What is NO push button? What is NC push button?
- >>How does the Bi-color LED switch work?

Leave Your Message

* Name

* Email (We will reply you via email in 24 hours)

Phone/WhatsApp/WeChat (Very important)

* Enter product details such as size, color, materials etc. and other specific requirements to receive an accurate quote.

Send

PRODUCTS CATEGORIES



HIGH QUALITY BLACK OXIDE BUTTON
22MM SWITCH RING LED



22MM AUTOMATIC SELF RESET
BUTTON 10A HIGH CURRENT



16MM ILLUMINATED PUSH BUTTON
RING LED PIN TERMINAL



© Copyright - 2003-2023 : All Rights Reserved.
Hot Products - Sitemap
Buzzer, Push Button, push button light switch,
Push button Switches, Push Button Micro Switch,
Momentary Push Button Switch,

CONTACT US

Huxi No.2 road, Huxi village, Liushi Town,
Yueqing City, 325604, Zhejiang Province, China
 0086-0577-61780678
 cdoe@cncdoe.com

NEWLETTER

For inquiries about our products or pricelist,
please leave your email to us and we will be
in touch within 24 hours.

INQUIRY NOW

SOCIAL

